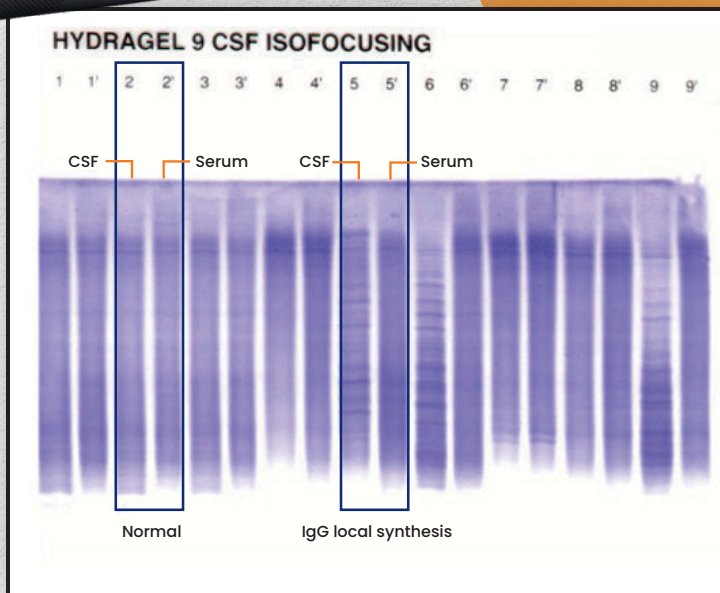


Multiple Sclerosis:

CSF Isofocusing, the gold standard assay to objectively detect
CNS local IgG synthesis





Test Principle

HYDRAGEL CSF ISOFOCUSING kit, used on the HYDRASYS 2 SCAN FOCUSING instrument, provides qualitative detection and immunological characterization of IgG oligoclonal banding in human CSF allowing the specific detection of intrathecal synthesis of immunoglobulins (inflammatory process of the central nervous system)

Key benefits

Detects Intrathecal IgG Production

IEF with immunofixation has 95% sensitivity and 90% specificity for detecting intrathecal IgG synthesis, a hallmark of MS.

More sensitive than older techniques like agarose gel electrophoresis or nephelometry

Distinguishes MS from Other Neurological Diseases

OCBs can be present before clinical symptoms or MRI changes become definitive.

Supports Early Diagnosis of MS

Differentiates between systemic (serum) IgG and intrathecal (CNS-originating) IgG by comparing CSF and serum samples run in parallel.

The pattern of OCBs can help distinguish MS from:

Viral encephalitis
Neurosarcoidosis
CNS lupus
Paraneoplastic syndromes

Compliance with international consensus :

HYDRAGEL CSF ISOFOCUSING meets all criteria set by the European Consensus (2005) to objectively detect CNS local IgG synthesis which is part of Mac Donald algorithms for selected multiple sclerosis patients.

We also provide:

- **CSF IgG Index** – A Key Marker for Intrathecal IgG Synthesis:
The CSF IgG Index is a quantitative laboratory parameter used to assess intrathecal (within CNS) IgG production, especially in the diagnosis of Multiple Sclerosis (MS) and other inflammatory neurological diseases.
- **K-free light chains (FLCs)** as a new biomarker, which are produced in excess over intact immunoglobulins and accumulate in CSF in the case of central nervous system-derived inflammation.

Ordering information

1. CSF Electrophoresis-Oligoclonal band - T116 (Specimen: Serum & CSF)
2. CSF IgG Index - G2122 (Specimen: Serum & CSF)
3. Kappa Free Light Chain, Spinal Fluid, T23184, specimen : CSF

PARTNERS IN HEALTH



DR. PAVAN DAVE

Consultant Pathologist

pavan.dave@neubergdiagnostics.com

+91 96240 04137



DR. PARTH SHAH

Scientific Advisor

parth.shah@neubergdiagnostics.com

079-40408181



DR. SANDIP SHAH

M.D. (Pathology & Bacteriology)

Laboratory Director

drsandip@neubergdiagnostics.com

079-40408181